

3-JAW CONCENTRIC GRIPPERS WITH LONG STROKE SERIES OVERVIEW

1

3-Jaw Concentric Grippers with long stroke / pneumatic / Grippers



3-JAW CONCENTRIC GRIPPERS WITH LONG STROKE PNEUMATIC

► **FURTHER INFORMATION** on page 160

WORKING CONDITIONS

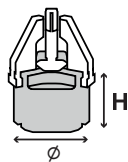
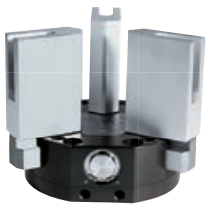
FUNCTIONALITY

PRICE

Series GD500 	clean	dirty	-	+	+	++
	■ ■ ■ ■ ■ ■ ■ ■	■ ■ ■ ■ ■ ■ ■ ■	■ ■ ■ ■ ■ ■ ■ ■	■ ■ ■ ■ ■ ■ ■ ■	■ ■ ■ ■ ■ ■ ■ ■	■ ■ ■ ■ ■ ■ ■ ■

„The flat“

- Reduced installation height due to horizontal drive
- Proven T slot guide
- Failure-free continuous operation



► **Technical Data**

Installation size	Stroke per Jaw [mm]		Gripping force [N]		Weight [kg]	
	from	to	from	to	from	to
GD530	30	30	1300	1300	7,4	7,4
GD540	40	40	2480	2480	19	19
GD560	60	60	2480	2480	29	29

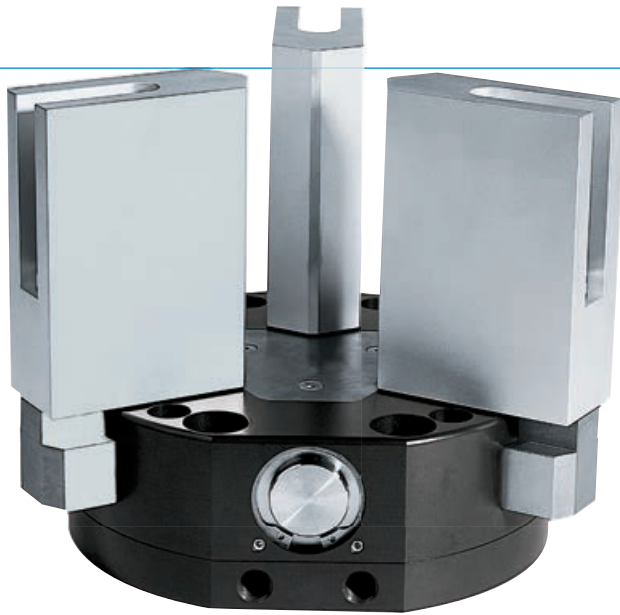
► **Dimension**

Installation size	Ø [mm]	Height [mm]
GD530	198	71
GD540	298	100
GD560	380	100

3-JAW CONCENTRIC GRIPPERS WITH LONG STROKE SERIES GD500

▶ PRODUCT ADVANTAGES

SOMMER
automatic **S**



“The flat”

- ▶ **Reduced installation height due to horizontal drive**
Reduces the interference contours for your application
- ▶ **Proven T slot guide**
This established and proven guiding technology stands for the highest process reliability like no other
- ▶ **Failure-free continuous operation**
Our uncompromising “Made in Germany” quality guarantees up to 10 million maintenance-free gripping cycles

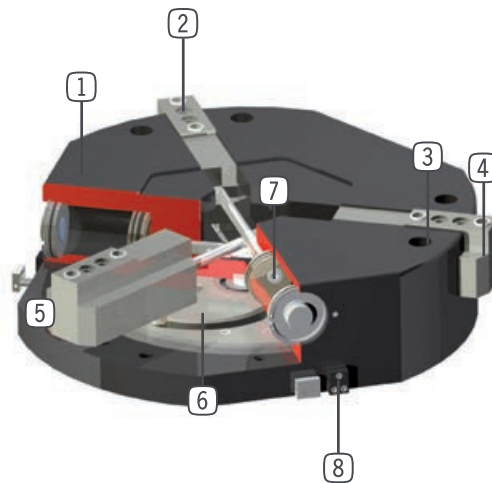
▶ THE BEST PRODUCT FOR YOUR APPLICATION



- ▶ **Our products love the challenge!**
Extreme conditions, all over the world—our tried and tested components and systems give you limitless possibilities:
Find the best product for your specific use:
www.zimmer-group.de

► BENEFITS IN DETAIL

- ① **Robust, lightweight housing**
- hard coated aluminium alloy
- ② **Removable centering sleeves**
- quick and economical positioning of the gripper fingers
- ③ **Mounting and positioning**
- ④ **Gripper jaw**
- ground, hardened steel
- individual gripper finger mounting
- ⑤ **Precise T-Slot guide**
- high forces and moments capacity
- ⑥ **Cam**
- synchronized jaw movement
- ⑦ **Drive**
- three double-acting pneumatic cylinders
- ⑧ **Mounting block**
- mounting for inductive proximity switch

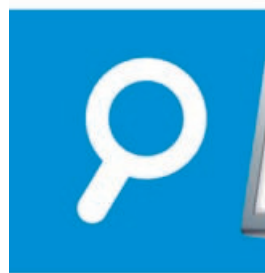


► FURTHER INFORMATION IS AVAILABLE ONLINE



► Technical Information

All information just a click away at: www.zimmer-group.de
Find data, illustrations, 3D models and Installation instructions for your installation size using the order number for your desired product.
Quick, clear and always current.

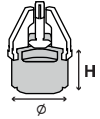
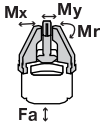
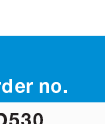


3-JAW CONCENTRIC GRIPPERS WITH LONG STROKE SERIES GD500

1

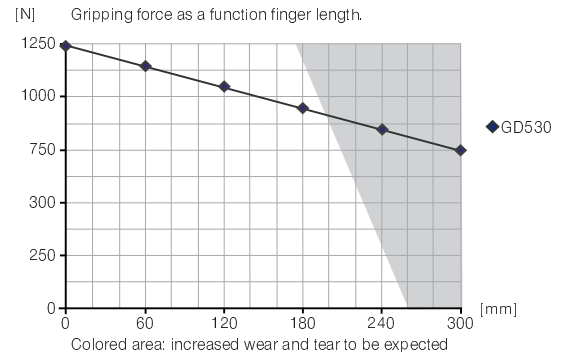
Series GD500 / 3-Jaw Concentric Grippers with Long Stroke / pneumatic / Grippers

Installation Size: GD530

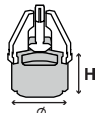
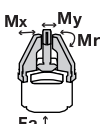
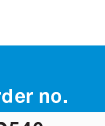
	▶ Dimension			
	Ø [mm]	Height [mm]		
	198	71		
	▶ Force and moment			
	Mr [Nm]	Mx [Nm]	My [Nm]	Fa [N]
	300	200	300	8000
	▶ Technical Data*			
	Stroke per jaw [mm]	Gripping force [N]		Weight [kg]
		opening	closing	
Order no.	30	1300	1300	7.4
GD530				

*All data measured at 6 bar

▶ Gripping force diagram

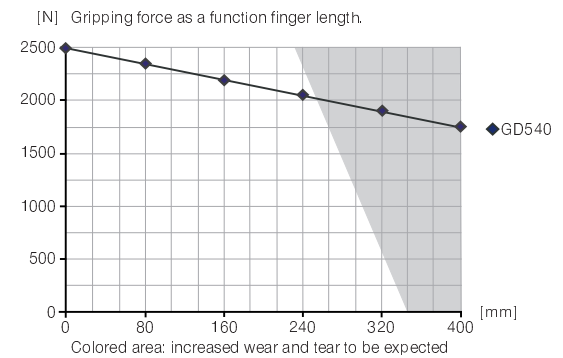


Installation Size: GD540

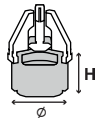
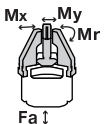
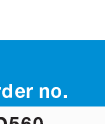
	▶ Dimension			
	Ø [mm]	Height [mm]		
	298	100		
	▶ Force and moment			
	Mr [Nm]	Mx [Nm]	My [Nm]	Fa [N]
	300	200	300	8000
	▶ Technical Data*			
	Stroke per jaw [mm]	Gripping force [N]		Weight [kg]
		opening	closing	
Order no.	40	2480	2480	19
GD540				

*All data measured at 6 bar

▶ Gripping force diagram

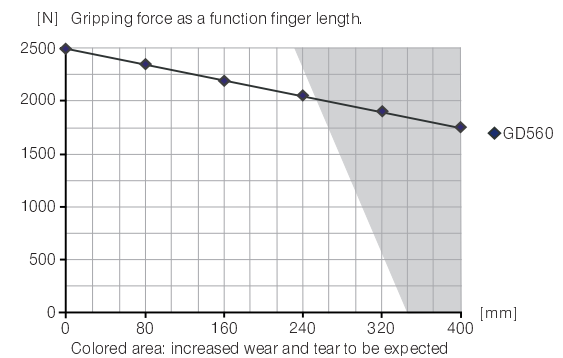


Installation Size: GD560

	▶ Dimension			
	Ø [mm]	Height ** [mm]		
	380	100		
	▶ Force and moment			
	Mr [Nm]	Mx [Nm]	My [Nm]	Fa [N]
	300	200	300	8000
	▶ Technical Data*			
	Stroke per jaw [mm]	Gripping force [N]		Weight [kg]
		opening	closing	
Order no.	60	2480	2480	29
GD560				

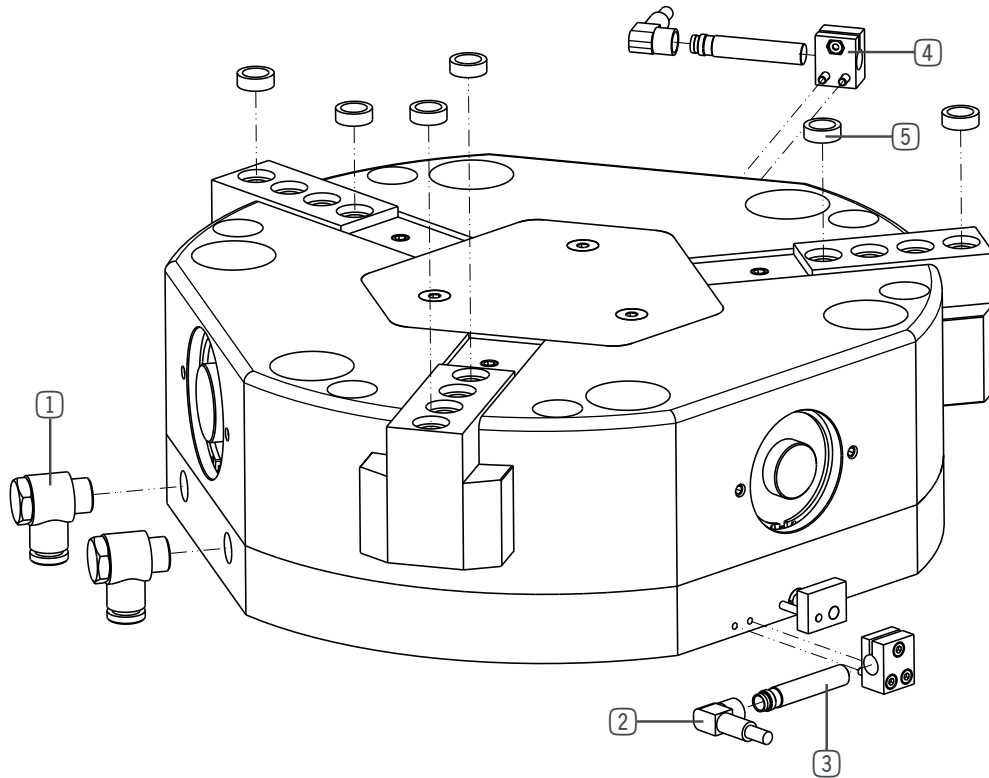
*All data measured at 6 bar

▶ Gripping force diagram



3-JAW CONCENTRIC GRIPPERS WITH LONG STROKE SERIES GD500

▶ ACCESSORIES



▶ Installation Size: GD530

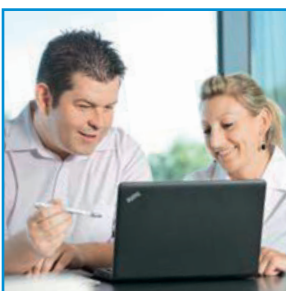
Pos.	Accessories	Order no.
①	Straight Fittings - Quick Connect Style	GV1-4X8
②	Plug-in connector Straight Cable 5m - Socket M8 (female)	KAG500
②	Plug-in connector Angled Cable 5m - Socket M8 (female)	KAW500
③	Inductive proximity switch - Cable 5 m	NJ8-E2
③	Inductive proximity switch - Connector M8	NJ8-E2S
	Quick Exhaust Valve	DEV08
	Pressure Safety Valve	DSV1-8
	Plug-in connector customizable Straight - Connector M8	S8-G-3
	Plug-in connector customizable Straight - Connector M12	S12-G-3
	Delivery contents	Order no.
④	Mounting block	KB8K
⑤	Centering Disc	BDST41600

▶ Installation Size: GD540

Pos.	Accessories	Order no.
①	Straight Fittings - Quick Connect Style	GV1-4X8
②	Plug-in connector Straight Cable 5m - Socket M8 (female)	KAG500
②	Plug-in connector Angled Cable 5m - Socket M8 (female)	KAW500
③	Inductive proximity switch - Cable 5 m	NJ8-E2
③	Inductive proximity switch - Connector M8	NJ8-E2S
	Quick Exhaust Valve	DEV08
	Pressure Safety Valve	DSV1-8
	Plug-in connector customizable Straight - Connector M8	S8-G-3
	Plug-in connector customizable Straight - Connector M12	S12-G-3
	Delivery contents	Order no.
④	Mounting block	KB8K
⑤	Centering Disc	BDST42000

► Installation Size: GD560		
Pos.	Accessories	Order no.
①	Straight Fittings - Quick Connect Style	GV1-4X8
②	Plug-in connector Straight Cable 5m - Socket M8 (female)	KAG500
②	Plug-in connector Angled Cable 5m - Socket M8 (female)	KAW500
③	Inductive proximity switch - Cable 5 m	NJ8-E2
③	Inductive proximity switch - Connector M8	NJ8-E2S
	Quick Exhaust Valve	DEV08
	Pressure Safety Valve	DSV1-8
	Plug-in connector customizable Straight - Connector M8	S8-G-3
	Plug-in connector customizable Straight - Connector M12	S12-G-3
Delivery contents		Order no.
④	Mounting block	KB8K
⑤	Centering Disc	BDST42000

ARE YOU ALREADY FAMILIAR WITH OUR EXPERTISE?



- TEAMS OF EXPERTS WITH INDUSTRY EXPERIENCE
- INTERNATIONALLY NETWORKED THROUGH WORLD-WIDE LOCATIONS
- THE HIGHEST QUALITY FOR ALL PRODUCTS AND SERVICES
- PRECISELY TAILORED AND ADVANCED PROCESS SOLUTIONS
- CONSTANT DEVELOPMENT OF OUR INDUSTRY EXPERTISE