

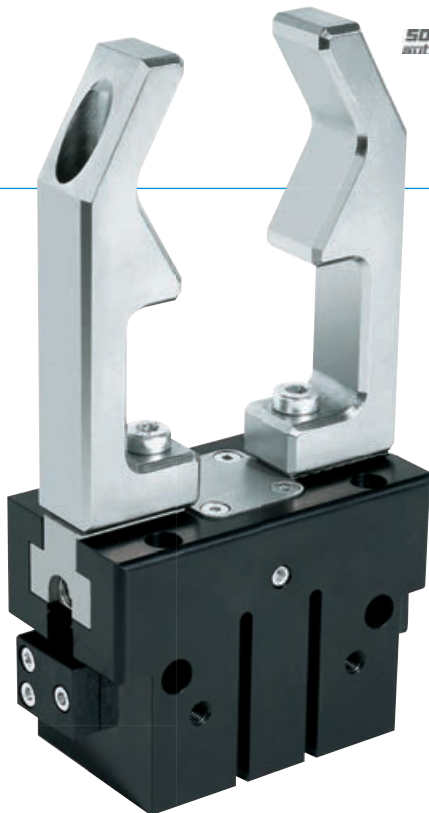
2-JAW PARALLEL GRIPPERS

SERIES GP400X

1

Series GP400X / 2-Jaw Parallel Grippers / pneumatic / Grippers

▶ PRODUCT ADVANTAGES



“The robust”

- ▶ **30% more guidance than the GP400 series**
Ingrained and overlapping gripper jaws mean optimal process reliability
- ▶ **20% higher moment load than the GP400 series**
FEM-optimised T-slotted guard rails provide the highest possible durability
- ▶ **Failure-free continuous operation**
Our uncompromising “Made in Germany” quality guarantees up to 10 million maintenance-free gripping cycles

▶ THE BEST PRODUCT FOR YOUR APPLICATION



▶ Our products love the challenge!

Extreme conditions, all over the world—our tried and tested components and systems give you limitless possibilities:
Find the best product for your specific use:
www.zimmer-group.de

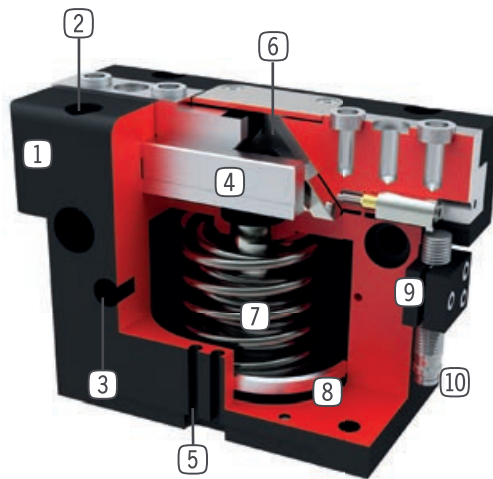
HOW TO ORDER CORRECTLY

- ▶ The product order numbers are arranged according to this diagram:

Order no.	GP403X	<input type="checkbox"/>	<input type="checkbox"/>	-C
Long stroke		N		
High forces		S		
For external gripping, self-locking, spring closing			C	
For internal gripping, self-locking, spring opening			O	

► BENEFITS IN DETAIL

- ① **Robust, lightweight housing**
- hard coated aluminium alloy
- ② **Mounting and positioning**
- mounting possible from several sides for versatile positioning
- ③ **Energy supply**
- possible from several sides
- ④ **Overlapping guide**
- for maximum forces and moments capacity
- ⑤ **Sensing slot**
- mounting and positioning of magnetic field sensors
- ⑥ **Wedge hook mechanism**
- synchronized the movement of the gripper jaws
- ⑦ **Integrated gripping force safety device**
- spring integrated into cylinder as energy storage
- ⑧ **Position sensing**
- permanent magnet for direct monitoring of piston movement
- ⑨ **Mounting block**
- mounting for inductive proximity switch (10)



► FURTHER INFORMATION IS AVAILABLE ONLINE



► Technical Information

All information just a click away at: www.zimmer-group.de
Find data, illustrations, 3D models and Installation instructions for your installation size using the order number for your desired product.
Quick, clear and always current.

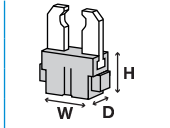


2-JAW PARALLEL GRIPPERS SERIES GP400X

1

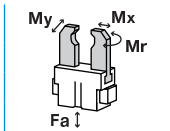
pneumatic / Grippers / 2-Jaw Parallel Grippers / Series GP400X

Installation Size: GP403X



Dimension

Width [mm]	Height** [mm]	Depth [mm]
40	31.5	24



Force and moment

Mr [Nm]	Mx [Nm]	My [Nm]	Fa [N]
6	12	12	500

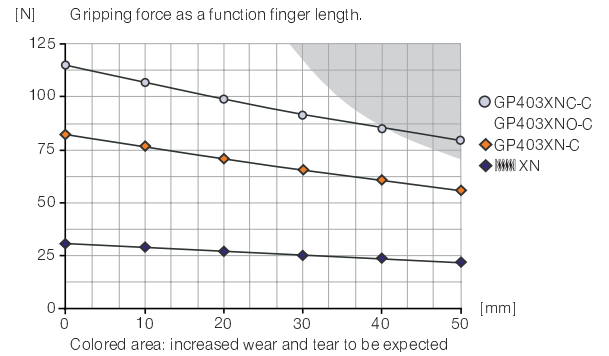
Technical Data*

Order no.	Stroke per jaw [mm]	Gripping force [N]		Weight [kg]
		opening	closing	
GP403XN-C	3	100	85	0.08
GP403XNC-C	3		115	0.1
GP403XNO-C	3	115		0.1

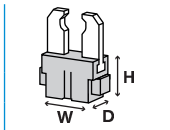
*All data measured at 6 bar

**Version with gripping force protection (NC, SC, NO, SO)

Gripping force diagram

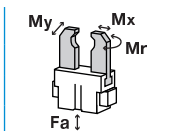


Installation Size: GP404X



Dimension

Width [mm]	Height** [mm]	Depth [mm]
50	38	27.8



Force and moment

Mr [Nm]	Mx [Nm]	My [Nm]	Fa [N]
8	18	15	700

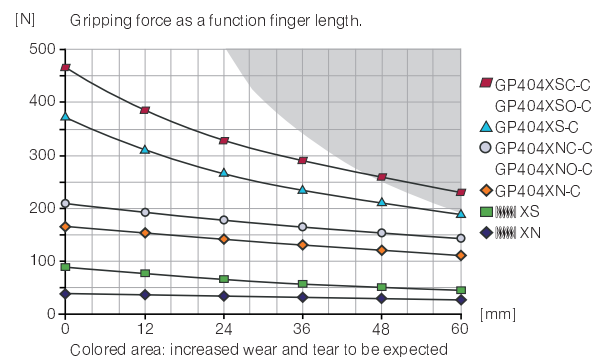
Technical Data*

Order no.	Stroke per jaw [mm]	Gripping force [N]		Weight [kg]
		opening	closing	
GP404XN-C	4	185	170	0.14
GP404XNC-C	4		210	0.16
GP404XNO-C	4	225		0.16
GP404XS-C	2	410	375	0.14
GP404XSC-C	2		465	0.16
GP404XSO-C	2	500		0.16

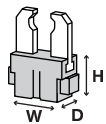
*All data measured at 6 bar

**Version with gripping force protection (NC, SC, NO, SO)

Gripping force diagram

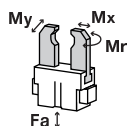


Installation Size: GP406X



Dimension

Width [mm]	Height** [mm]	Depth [mm]
64	47	36



Force and moment

Mr [Nm]	Mx [Nm]	My [Nm]	Fa [N]
35	60	45	1200

Technical Data*

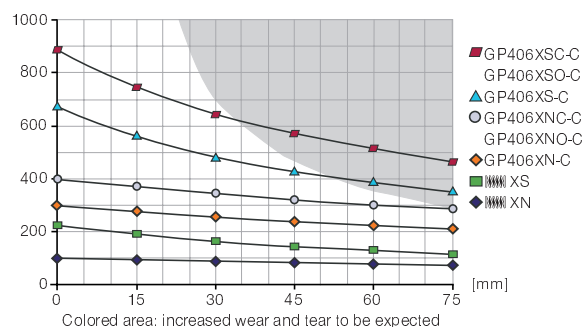
Order no.	Stroke per jaw [mm]	Gripping force [N]		Weight [kg]
		opening	closing	
GP406XN-C	6	325	300	0.27
GP406XNC-C	6		400	0.32
GP406XNO-C	6	425		0.32
GP406XS-C	3	725	670	0.27
GP406XSC-C	3		900	0.32
GP406XSO-C	3	950		0.32

*All data measured at 6 bar

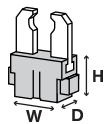
**Version with gripping force protection (NC, SC, NO, SO)

Gripping force diagram

[N] Gripping force as a function finger length.

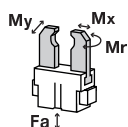


Installation Size: GP408X



Dimension

Width [mm]	Height** [mm]	Depth [mm]
80	59	42



Force and moment

Mr [Nm]	Mx [Nm]	My [Nm]	Fa [N]
50	95	60	1800

Technical Data*

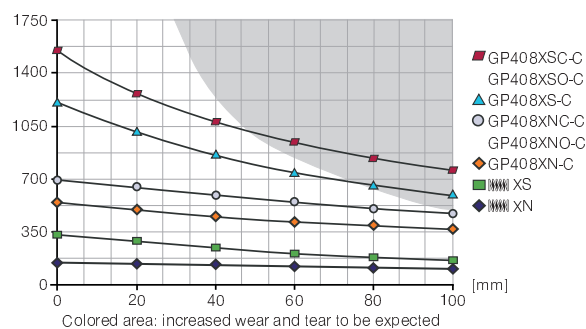
Order no.	Stroke per jaw [mm]	Gripping force [N]		Weight [kg]
		opening	closing	
GP408XN-C	8	590	550	0.5
GP408XNC-C	8		700	0.57
GP408XNO-C	8	740		0.57
GP408XS-C	4	1320	1230	0.5
GP408XSC-C	4		1570	0.57
GP408XSO-C	4	1660		0.57

*All data measured at 6 bar

**Version with gripping force protection (NC, SC, NO, SO)

Gripping force diagram

[N] Gripping force as a function finger length.



2-JAW PARALLEL GRIPPERS

SERIES GP400X

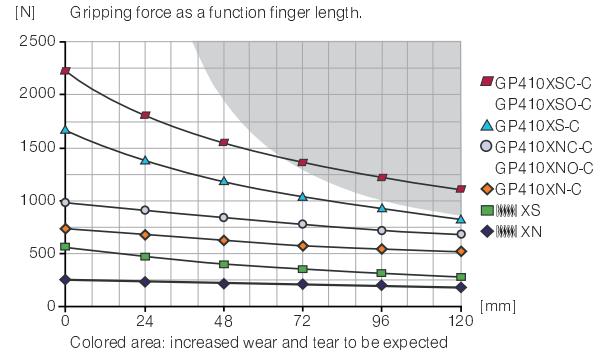
Installation Size: GP410X

	Dimension			
	Width [mm]	Height* [mm]	Depth [mm]	
	100	73	50	
	Force and moment			
	Mr [Nm]	Mx [Nm]	My [Nm]	Fa [N]
	75	120	90	2500
Technical Data*				
Order no.	Stroke per jaw [mm]	Gripping force [N]		Weight [kg]
		opening	closing	
GP410XN-C	10	795	740	0.85
GP410XNC-C	10		990	1
GP410XNO-C	10	1050		1
GP410XS-C	5	1770	1650	0.85
GP410XSC-C	5		2215	1
GP410XSO-C	5	2340		1

*All data measured at 6 bar

** Version with gripping force protection (NC, SC, NO, SO)

Gripping force diagram



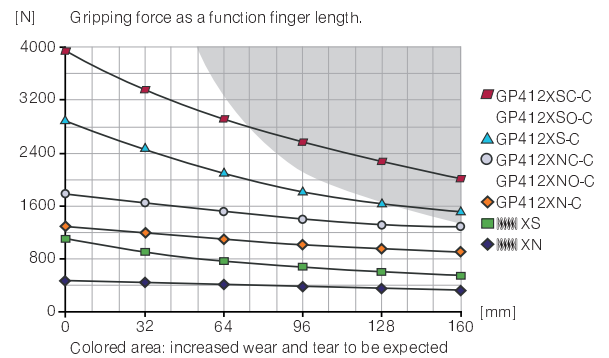
Installation Size: GP412X

	Dimension			
	Width [mm]	Height* [mm]	Depth [mm]	
	125	89	60	
	Force and moment			
	Mr [Nm]	Mx [Nm]	My [Nm]	Fa [N]
	100	145	120	3200
Technical Data*				
Order no.	Stroke per jaw [mm]	Gripping force [N]		Weight [kg]
		opening	closing	
GP412XN-C	12	1370	1290	1.5
GP412XNC-C	12		1780	1.78
GP412XNO-C	12	1850		1.78
GP412XS-C	6	3050	2890	1.5
GP412XSC-C	6		3960	1.78
GP412XSO-C	6	4130		1.78

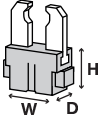
*All data measured at 6 bar

** Version with gripping force protection (NC, SC, NO, SO)

Gripping force diagram

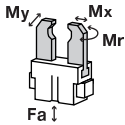


Installation Size: GP416X



Dimension

Width [mm]	Height** [mm]	Depth [mm]
160	108	72



Force and moment

Mr [Nm]	Mx [Nm]	My [Nm]	Fa [N]
140	190	180	5000

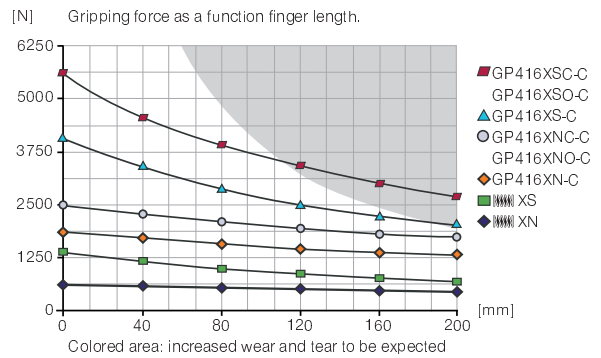
Technical Data*

Order no.	Stroke per jaw [mm]	Gripping force [N]		Weight [kg]
		opening	closing	
GP416XN-C	16	1960	1860	2.9
GP416XNC-C	16		2490	3.4
GP416XNO-C	16	2590		3.4
GP416XS-C	8	4390	4160	2.9
GP416XSC-C	8		5560	3.4
GP416XSO-C	8	5780		3.4

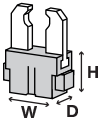
*All data measured at 6 bar

**Version with gripping force protection (NC, SC, NO, SO)

Gripping force diagram

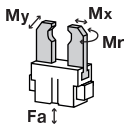


Installation Size: GP420X



Dimension

Width [mm]	Height** [mm]	Depth [mm]
200	133	95



Force and moment

Mr [Nm]	Mx [Nm]	My [Nm]	Fa [N]
170	210	220	7000

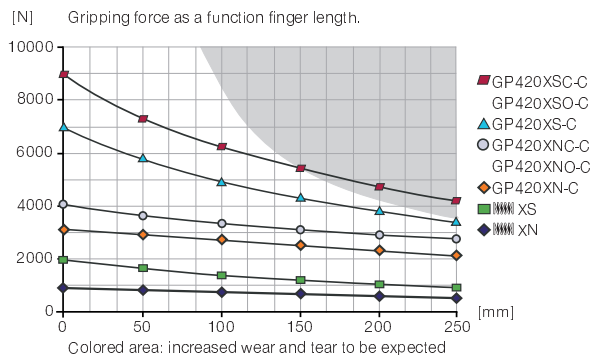
Technical Data*

Order no.	Stroke per jaw [mm]	Gripping force [N]		Weight [kg]
		opening	closing	
GP420XN-C	20	3330	3175	5.5
GP420XNC-C	20		4060	6.7
GP420XNO-C	20	4215		6.7
GP420XS-C	10	7430	7080	5.5
GP420XSC-C	10		9060	6.7
GP420XSO-C	10	9400		6.7

*All data measured at 6 bar

**Version with gripping force protection (NC, SC, NO, SO)

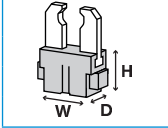
Gripping force diagram



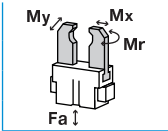
2-JAW PARALLEL GRIPPERS

SERIES GP400X

Installation Size: GP430X



Dimension		
Width [mm]	Height* [mm]	Depth [mm]
260	194	139



Force and moment			
Mr [Nm]	Mx [Nm]	My [Nm]	Fa [N]
200	330	300	9000

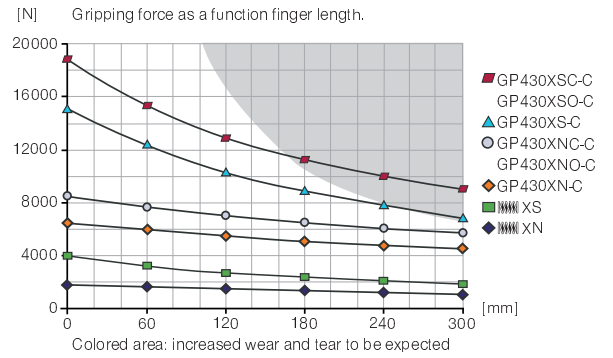
Technical Data*

Order no.	Stroke per jaw [mm]	Gripping force [N]		Weight [kg]
		opening	closing	
GP430XN-C	30	6830	6675	14
GP430XNC-C	30		8480	18.9
GP430XNO-C	30	8640		18.9
GP430XS-C	15	15250	14900	14
GP430XSC-C	15		18930	18.9
GP430XSO-C	15	19275		18.9

*All data measured at 6 bar

** Version with gripping force protection (NC, SC, NO, SO)

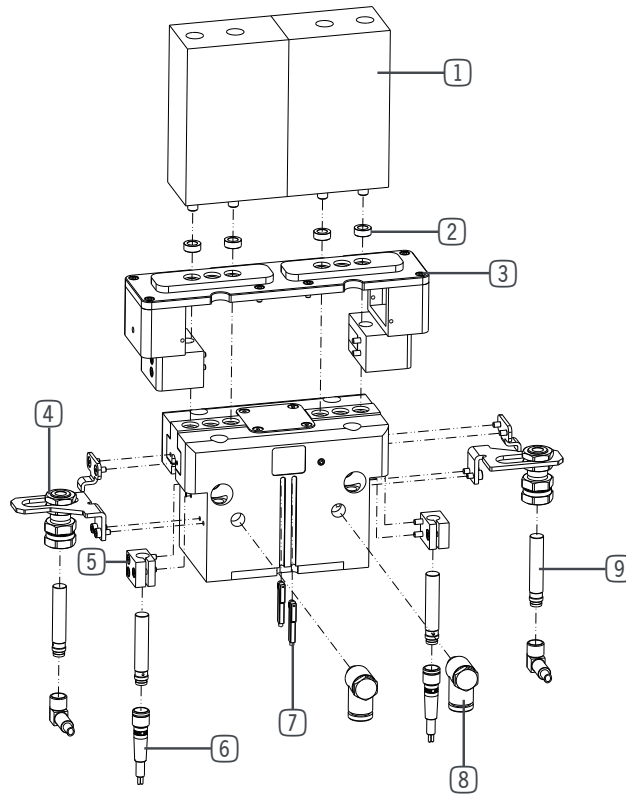
Gripping force diagram



2-JAW PARALLEL GRIPPERS

SERIES GP400X

▶ ACCESSORIES



▶ Installation Size: GP403X

Pos.	Accessories	Order no.
①	Universal Jaw Aluminium	UB403
①	Universal Jaw Steel	UB403ST
⑥	Plug-in connector Straight Cable 5m - Socket M8 (female)	KAG500
⑥	Plug-in connector Angled Cable 5m - Socket M8 (female)	KAW500
⑦	Magnetic field sensor Angled Cable 5 m	MFS103KHC
⑦	Magnetic field sensor Angled Cable 0,3 m - Connector M8	MFS103SKHC
⑧	Straight Fittings - Quick Connect Style	GVM5
⑨	Inductive proximity switch - Cable 5 m	NJ3-E2
⑨	Inductive Proximity Switch Cable 0,3 m - Connector M8	NJ3-E2SK
	Quick Exhaust Valve	DEV04
	Pressure Safety Valve	DSV1-8
	Plug-in connector customizable Straight - Connector M8	S8-G-3
	Plug-in connector customizable Straight - Connector M12	S12-G-3
	Delivery contents	Order no.
②	Centering Disc	BDST40400
⑤	Mounting block	KB3-03

▶ Installation Size: GP404X

Pos.	Accessories	Order no.
①	Universal Jaw Aluminium	UB404
①	Universal Jaw Steel	UB404ST
③	Dust protection	PR404-B
⑥	Plug-in connector Straight Cable 5m - Socket M8 (female)	KAG500
⑥	Plug-in connector Angled Cable 5m - Socket M8 (female)	KAW500
⑦	Magnetic field sensor Angled Cable 5 m	MFS103KHC
⑦	Magnetic field sensor Angled Cable 0,3 m - Connector M8	MFS103SKHC
⑧	Straight Fittings - Quick Connect Style	GVM5
⑨	Inductive proximity switch - Cable 5 m	NJ3-E2
⑨	Inductive Proximity Switch Cable 0,3 m - Connector M8	NJ3-E2SK
	Quick Exhaust Valve	DEV04
	Pressure Safety Valve	DSV1-8
	Plug-in connector customizable Straight - Connector M8	S8-G-3
	Plug-in connector customizable Straight - Connector M12	S12-G-3
	Delivery contents	Order no.
②	Centering Disc	BDST40400
⑤	Mounting block	KB3-08

► Installation Size: **GP406X**

Pos.	Accessories	Order no.
①	Universal Jaw Aluminium	UB406
①	Universal Jaw Steel	UB406ST
③	Dust protection	PR406-B
⑥	Plug-in connector Straight Cable 5m - Socket M8 (female)	KAG500
⑥	Plug-in connector Angled Cable 5m - Socket M8 (female)	KAW500
⑦	Magnetic field sensor Angled Cable 5 m	MFS103KHC
⑦	Magnetic field sensor Angled Cable 0,3 m - Connector M8	MFS103SKHC
⑦	Magnetic field sensor Straight Cable 5 m	MFS204KHC
⑦	Magnetic field sensor Straight Cable 0,3 m - Connector M8	MFS204SKHC
⑧	Straight Fittings - Quick Connect Style	GVM5
⑨	Inductive proximity switch - Cable 5 m	NJ8-E2
⑨	Inductive proximity switch - Connector M8	NJ8-E2S
	Quick Exhaust Valve	DEV04
	Pressure Safety Valve	DSV1-8
	Plug-in connector customizable Straight - Connector M8	S8-G-3
	Plug-in connector customizable Straight - Connector M12	S12-G-3
	Delivery contents	Order no.
②	Centering Disc	BDST40600
⑤	Mounting block	KB8K

► Installation Size: **GP408X**

Pos.	Accessories	Order no.
①	Universal Jaw Aluminium	UB408
①	Universal Jaw Steel	UB408ST
③	Dust protection	PR408-B
⑥	Plug-in connector Straight Cable 5m - Socket M8 (female)	KAG500
⑥	Plug-in connector Angled Cable 5m - Socket M8 (female)	KAW500
⑦	Magnetic field sensor Angled Cable 5 m	MFS103KHC
⑦	Magnetic field sensor Angled Cable 0,3 m - Connector M8	MFS103SKHC
⑦	Magnetic field sensor Straight Cable 5 m	MFS204KHC
⑦	Magnetic field sensor Straight Cable 0,3 m - Connector M8	MFS204SKHC
⑧	Straight Fittings - Quick Connect Style	GVM5
⑨	Inductive proximity switch - Cable 5 m	NJ8-E2
⑨	Inductive proximity switch - Connector M8	NJ8-E2S
	Quick Exhaust Valve	DEV04
	Pressure Safety Valve	DSV1-8
	Plug-in connector customizable Straight - Connector M8	S8-G-3
	Plug-in connector customizable Straight - Connector M12	S12-G-3
	Delivery contents	Order no.
②	Centering Disc	BDST40800
⑤	Mounting block	KB8K

► Installation Size: **GP410X**

Pos.	Accessories	Order no.
①	Universal Jaw Aluminium	UB410
①	Universal Jaw Steel	UB410ST
③	Dust protection	PR410-B
④	Alternate proximity bracket	KHA410-B-8
⑥	Plug-in connector Straight Cable 5m - Socket M8 (female)	KAG500
⑥	Plug-in connector Angled Cable 5m - Socket M8 (female)	KAW500
⑦	Magnetic field sensor Angled Cable 5 m	MFS103KHC
⑦	Magnetic field sensor Angled Cable 0,3 m - Connector M8	MFS103SKHC
⑦	Magnetic field sensor Straight Cable 5 m	MFS204KHC
⑦	Magnetic field sensor Straight Cable 0,3 m - Connector M8	MFS204SKHC
⑧	Straight Fittings - Quick Connect Style	GV1-8X6
⑨	Inductive proximity switch - Cable 5 m	NJ8-E2
⑨	Inductive proximity switch - Connector M8	NJ8-E2S
	Quick Exhaust Valve	DEV06
	Pressure Safety Valve	DSV1-8
	Plug-in connector customizable Straight - Connector M8	S8-G-3
	Plug-in connector customizable Straight - Connector M12	S12-G-3
	Delivery contents	Order no.
②	Centering Disc	BDST41000
⑤	Mounting block	KB8K

► Installation Size: **GP412X**

Pos.	Accessories	Order no.
①	Universal Jaw Aluminium	UB412
①	Universal Jaw Steel	UB412ST
③	Dust protection	PR412-B
④	Alternate proximity bracket	KHA412-B-8
⑥	Plug-in connector Straight Cable 5m - Socket M8 (female)	KAG500
⑥	Plug-in connector Angled Cable 5m - Socket M8 (female)	KAW500
⑦	Magnetic field sensor Angled Cable 5 m	MFS103KHC
⑦	Magnetic field sensor Angled Cable 0,3 m - Connector M8	MFS103SKHC
⑦	Magnetic field sensor Straight Cable 5 m	MFS204KHC
⑦	Magnetic field sensor Straight Cable 0,3 m - Connector M8	MFS204SKHC
⑧	Straight Fittings - Quick Connect Style	GV1-8X6
⑨	Inductive proximity switch - Cable 5 m	NJ8-E2
⑨	Inductive proximity switch - Connector M8	NJ8-E2S
	Quick Exhaust Valve	DEV06
	Pressure Safety Valve	DSV1-8
	Plug-in connector customizable Straight - Connector M8	S8-G-3
	Plug-in connector customizable Straight - Connector M12	S12-G-3
	Delivery contents	Order no.
②	Centering Disc	BDST41000
⑤	Mounting block	KB8K

2-JAW PARALLEL GRIPPERS

SERIES GP400X

▶ ACCESSORIES

▶ Installation Size: GP416X

Pos.	Accessories	Order no.
①	Universal Jaw Aluminium	UB416
①	Universal Jaw Steel	UB416ST
③	Dust protection	PR416-B
④	Alternate proximity bracket	KHA416-B-8
⑥	Plug-in connector Straight Cable 5m - Socket M8 (female)	KAG500
⑥	Plug-in connector Angled Cable 5m - Socket M8 (female)	KAW500
⑦	Magnetic field sensor Angled Cable 5 m	MFS103KHC
⑦	Magnetic field sensor Angled Cable 0,3 m - Connector M8	MFS103SKHC
⑦	Magnetic field sensor Straight Cable 5 m	MFS204KHC
⑦	Magnetic field sensor Straight Cable 0,3 m - Connector M8	MFS204SKHC
⑧	Straight Fittings - Quick Connect Style	GV1-8X6
⑨	Inductive proximity switch - Cable 5 m	NJ8-E2
⑨	Inductive proximity switch - Connector M8	NJ8-E2S
	Quick Exhaust Valve	DEV06
	Pressure Safety Valve	DSV1-8
	Plug-in connector customizable Straight - Connector M8	S8-G-3
	Plug-in connector customizable Straight - Connector M12	S12-G-3
	Delivery contents	Order no.
②	Centering Disc	BDST41600
⑤	Mounting block	KB8K

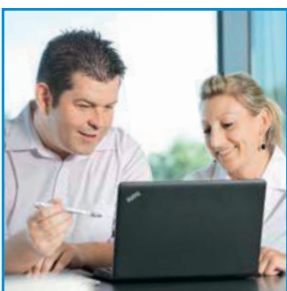
▶ Installation Size: GP430X

Pos.	Accessories	Order no.
①	Universal Jaw Aluminium	UB430
①	Universal Jaw Steel	UB430ST
③	Dust protection	PR430-B
④	Alternate proximity bracket	KHA430-B-8
⑥	Plug-in connector Straight Cable 5m - Socket M8 (female)	KAG500
⑥	Plug-in connector Angled Cable 5m - Socket M8 (female)	KAW500
⑦	Magnetic field sensor Angled Cable 5 m	MFS103KHC
⑦	Magnetic field sensor Angled Cable 0,3 m - Connector M8	MFS103SKHC
⑦	Magnetic field sensor Straight Cable 5 m	MFS204KHC
⑦	Magnetic field sensor Straight Cable 0,3 m - Connector M8	MFS204SKHC
⑧	Straight Fittings - Quick Connect Style	GV1-4X8
⑨	Inductive proximity switch - Cable 5 m	NJ8-E2
⑨	Inductive proximity switch - Connector M8	NJ8-E2S
	Quick Exhaust Valve	DEV08
	Pressure Safety Valve	DSV1-8
	Plug-in connector customizable Straight - Connector M8	S8-G-3
	Plug-in connector customizable Straight - Connector M12	S12-G-3
	Delivery contents	Order no.
②	Centering Disc	BDST43000
⑤	Mounting block	KB8K

▶ Installation Size: GP420X

Pos.	Accessories	Order no.
①	Universal Jaw Aluminium	UB420
①	Universal Jaw Steel	UB420ST
③	Dust protection	PR420-B
④	Alternate proximity bracket	KHA420-B-8
⑥	Plug-in connector Straight Cable 5m - Socket M8 (female)	KAG500
⑥	Plug-in connector Angled Cable 5m - Socket M8 (female)	KAW500
⑦	Magnetic field sensor Angled Cable 5 m	MFS103KHC
⑦	Magnetic field sensor Angled Cable 0,3 m - Connector M8	MFS103SKHC
⑦	Magnetic field sensor Straight Cable 5 m	MFS204KHC
⑦	Magnetic field sensor Straight Cable 0,3 m - Connector M8	MFS204SKHC
⑧	Straight Fittings - Quick Connect Style	GV1-4X8
⑨	Inductive proximity switch - Cable 5 m	NJ8-E2
⑨	Inductive proximity switch - Connector M8	NJ8-E2S
	Quick Exhaust Valve	DEV08
	Pressure Safety Valve	DSV1-8
	Plug-in connector customizable Straight - Connector M8	S8-G-3
	Plug-in connector customizable Straight - Connector M12	S12-G-3
	Delivery contents	Order no.
②	Centering Disc	BDST42000
⑤	Mounting block	KB8K

ARE YOU ALREADY FAMILIAR WITH OUR EXPERTISE?



- ▶ TEAMS OF EXPERTS WITH INDUSTRY EXPERIENCE
- ▶ INTERNATIONALLY NETWORKED THROUGH WORLD-WIDE LOCATIONS
- ▶ THE HIGHEST QUALITY FOR ALL PRODUCTS AND SERVICES
- ▶ PRECISELY TAILORED AND ADVANCED PROCESS SOLUTIONS
- ▶ CONSTANT DEVELOPMENT OF OUR INDUSTRY EXPERTISE