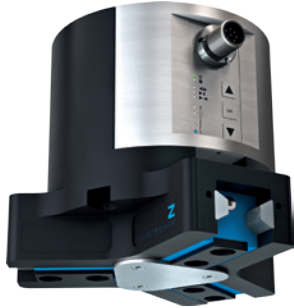


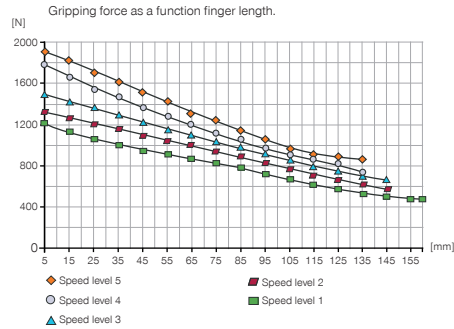
3-JAW CONCENTRIC GRIPPERS

INSTALLATION SIZE GED5010

▶ PRODUCT SPECIFICATIONS



▶ Gripping force diagram



▶ Forces and moments

Displays static forces and moments that can also have an effect, besides the gripping force.



Mr [Nm]	75
Mx [Nm]	125
My [Nm]	95
Fa [N]	2700

▶ TECHNICAL DATA - BASIC VERSION

Order no.	GED5010N
Stroke per jaw [mm]	10
Control time [s]	0.035
Weight per jaw max. [kg]	1.3
Length of the gripper fingers max. [mm]*	160
Repetition accuracy +/- [mm]	0.01
Voltage [V]	24
Current consumption max. [A]	5
Operating temperature min. [°C]	5
Operating temperature max. [°C]	50
Protection to IEC 60529	IP64
Weight [kg]	2.33

*Depending on speed level selected

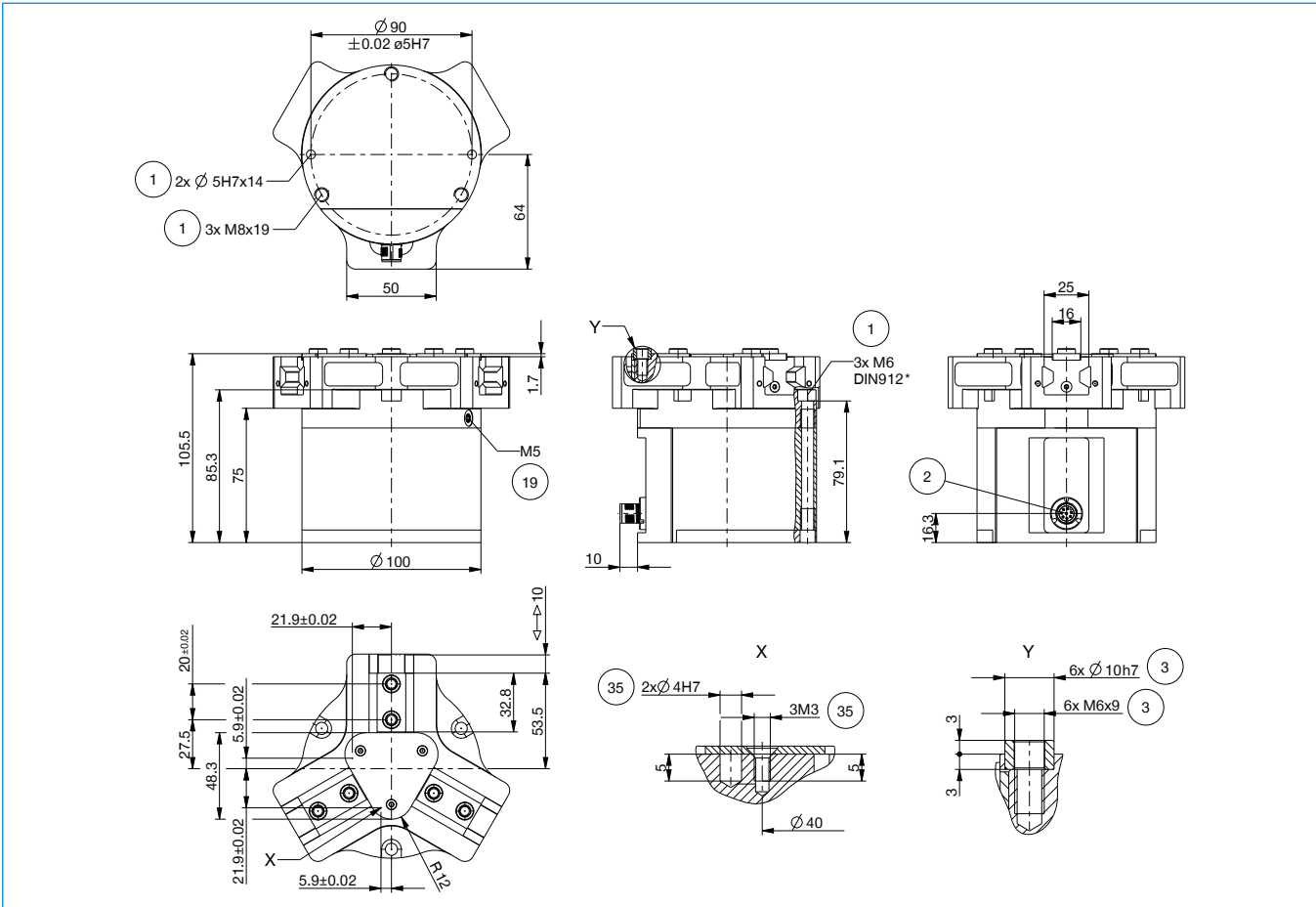
▶ TECHNICAL DATA - MODES

Order no.	GED5010N
Gripping force → ← min. / max. [N]	1200 / 1900
Gripping force ↔ min. / max. [N]	1200 / 1900
Travel time → ← min. / max. [s]	0,21 / 0,32
Travel time ↔ min. / max. [s]	0,21 / 0,32

Order no.	GED5010N
Gripping force → ← min. / max. [N]	1200 / 1900
Gripping force ↔ min. / max. [N]	-
Travel time → ← min. / max. [s]	0,21 / 0,32
Travel time ↔ min. / max. [s]	0,16

Order no.	GED5010N
Gripping force → ← min. / max. [N]	-
Gripping force ↔ min. / max. [N]	1200 / 1900
Travel time → ← min. / max. [s]	0,16
Travel time ↔ min. / max. [s]	0,21 / 0,32

TECHNICAL DRAWINGS



① Gripper attachment

② Energy supply

③ Fixing for gripper finger

④ Air purge connection option

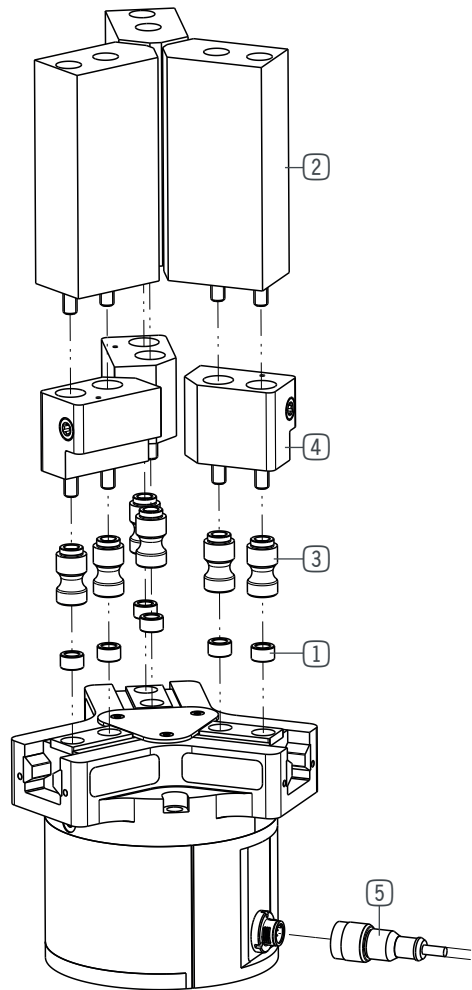
⑤ Attachment option for customer-specific fittings

3-JAW CONCENTRIC GRIPPERS

INSTALLATION SIZE GED5010

1

Installation size GED5010 / 3-Jaw Concentric Grippers / electric / Grippers



▶ INCLUDED IN DELIVERY



Centering Disc

018187

► RECOMMENDED ACCESSORIES



Universal jaw aluminium

UB5010AL



Universal jaw steel

UB5010ST



Pressure piece

ADS5010-05



Changeable jaw, loose-part-set

WB5010L



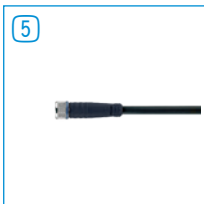
Changeable jaw, fix-part

WB5010F



Plug-in Connector Angled Cable 10 m - Female M12

KAW1000B8

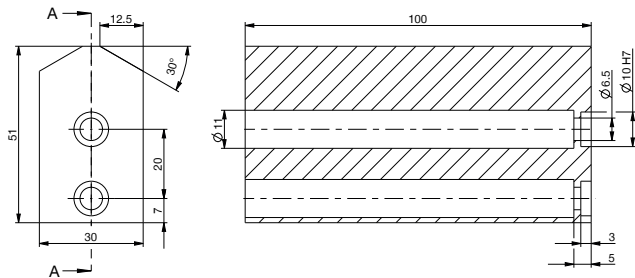


Plug-in Connector Straight Cable 10 m - Female M12

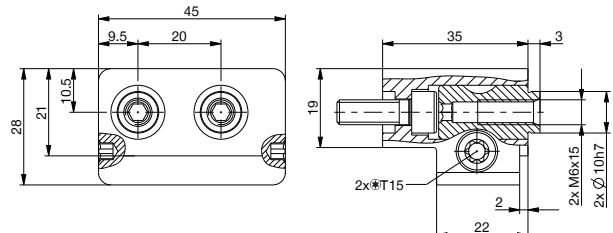
KAG1000B8

► TECHNICAL DRAWINGS ACCESSORIES

One universal jaw is required for each gripper jaw (2)
A-A



For each gripper jaw, one interchangeable jaw loose part set (3) and one interchangeable jaw fixed part (4) are needed



Gripper is fastened via the pressure piece

