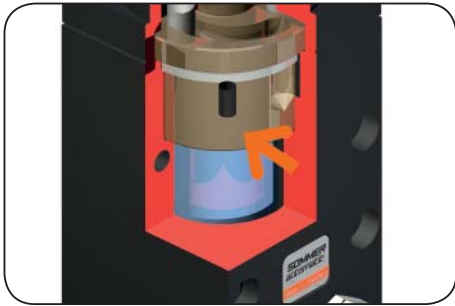


# 3-Jaw Concentric Grippers

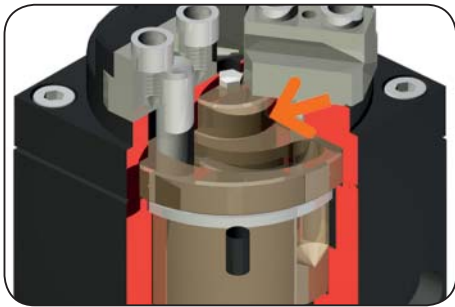
## Highlights



### Drive

#### Electrical transmission motor 24VDC

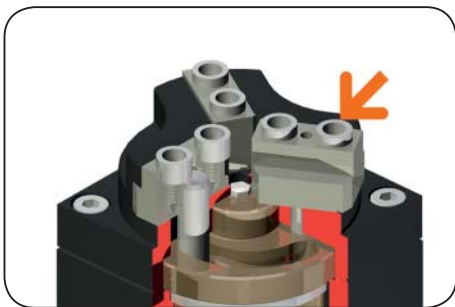
- In conjunction with curve disc for rapid stroke and force stroke
- High drive force when opening (O) or closing (C)
- Gripping force up to 350N
- Rapid cycle times



### Force transfer

#### Positively driven curve disc

- Rapid stroke and force stroke on version with 6 mm stroke per jaw
- Optimum force steering of drive force in gripping force
- Self-centering
- Synchronisation
- High repeat accuracy



### Gripping jaw intake

#### From individual gripping jaw via centering sleeve

- Precise positioning of individual gripping jaws
- Quick, cost-effective and therefore economical jaw changing
- Space-saving fixing



### Machine connection

#### Energy feed, fixing and positioning possibilities on several sides

- Optimum integration into the workroom through individual mounting situation
- Standardised interface



## Terms

Gripping force:	arithmetic sum of the individual forces occurring at the jaws
Closing/opening time:	required time for the gripper jaws to cover the maximum stroke distance
Repeatability:	at end stops after 50/100 consecutive cycles
Gripping force safety:	the gripping force is guaranteed by the shape of curve disc. It is only available if the curve disc travels to its stroke end during gripping. Only on versions with 6 mm stroke per jaw
Cycle:	angle of rotation covered by the drive motor in an open and close movement
Maintenance:	recommended at 5 mil. cycles (please see the owner's manual for conditions, download from <a href="http://www.sommer-automatic.com">www.sommer-automatic.com</a> )
	- long maintenance intervals keep costs down
	- long lifespan

## Design

- ① **Removable centering sleeve**
- quick and cost effective positioning of the gripper fingers

- ② **Gripper jaw**
- hardened steel
  - individual gripper finger mounting

- ⑤ **Guide**
- precise T-Slot guide for high forces and moments capacity

- ⑥ **Position sensing**
- measured at the end of stroke via power increase on the motor



- ③ **Positively driven curve disc**
- synchronized gripper jaw movement
  - high force transfer
  - rapid stroke and force stroke (version with 6 mm stroke per jaw)

- ④ **Drive**
- electric drive by 24 VDC step motor

- ⑦ **Energy feed**
- standardised interface M8 round plug connection signal control line (use only cable without diode)

- ⑧ **Robust, lightweight housing**
- hard coated aluminium alloy

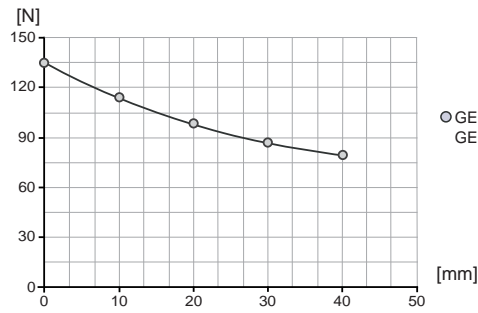
# 3-Jaw Concentric Grippers



Picture shows GED1302

## Gripping force diagram

Gripping force as a function of jaw length.



## Forces and Moments

Max allowable forces and moments on jaw.



Mr [Nm]:	FA ↓	5
Mx [Nm]:		5
My [Nm]:		4
Fa [N]:		120

### Included with purchase



Centring sleeve  
Order no.: **BDST02900**



Control  
Order no.: **ELEGR01**

### Recommended accessories

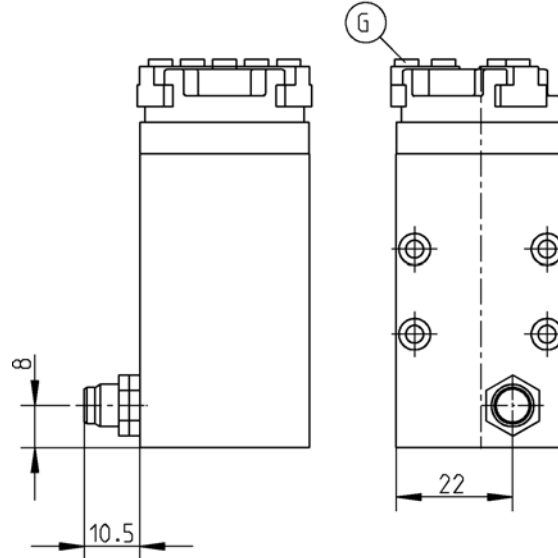


Cable straight plug  
Order no.: **KAG500**



Cable angled plug  
Order no.: **KAW500**

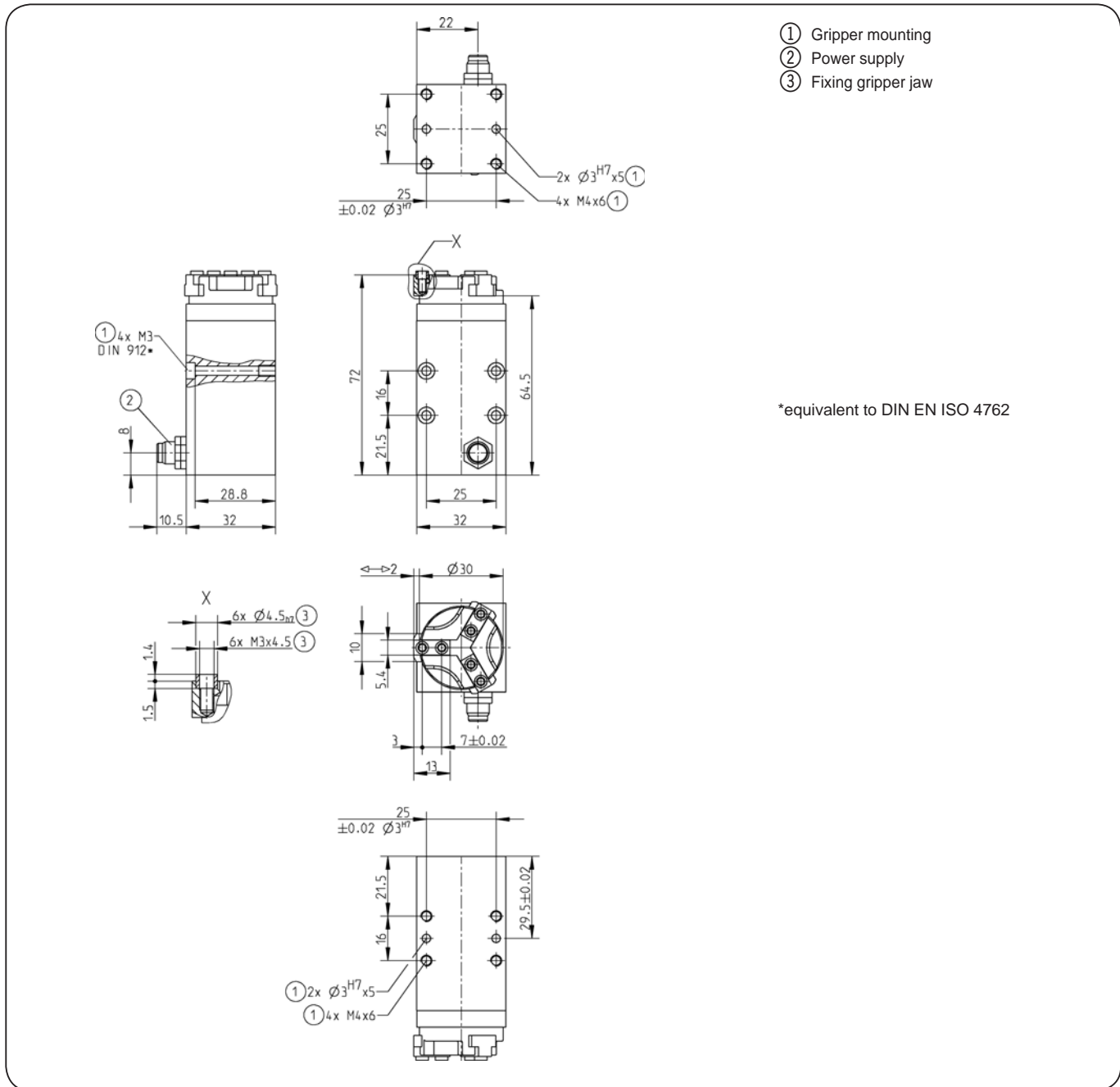
## Accessory



Subject to change without prior notice

<b>Order no.:</b>	<b>GED1302</b>
Stroke per jaw [mm]:	2
Gripping force in closing (adjustable) [N]:	140
Gripping force in opening (adjustable) [N]:	140
Closing time/opening time [s]:	0,2
Repeatability +/- [mm]:	0,02
Voltage [V]*:	24
Max. current regulable by potentiometer [mA]:	140
Min./max. operating temperature [°C]:	5-80
Protection class:	IP52
Weight [kg]:	0,250

\* 12 Voltage on request



Subject to change without prior notice

# 3-Jaw Concentric Grippers

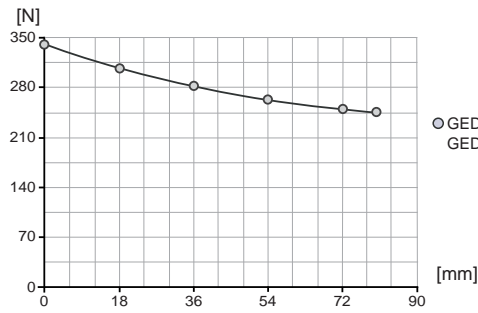


ø 85 mm

Picture shows GED1306C

## Gripping force diagram

Gripping force as a function of jaw length.



○ GED1306C →←  
 ○ GED13060 ↔↔

## Forces and Moments

Max allowable forces and moments on jaw.



Mr [Nm]:	FA ↓	30
Mx [Nm]:		25
My [Nm]:		20
Fa [N]:		800

### Included with purchase



Centring sleeve  
 Order no.: **BDST40800**



Control  
 Order no.: **ELEGR04**

### Recommended accessories

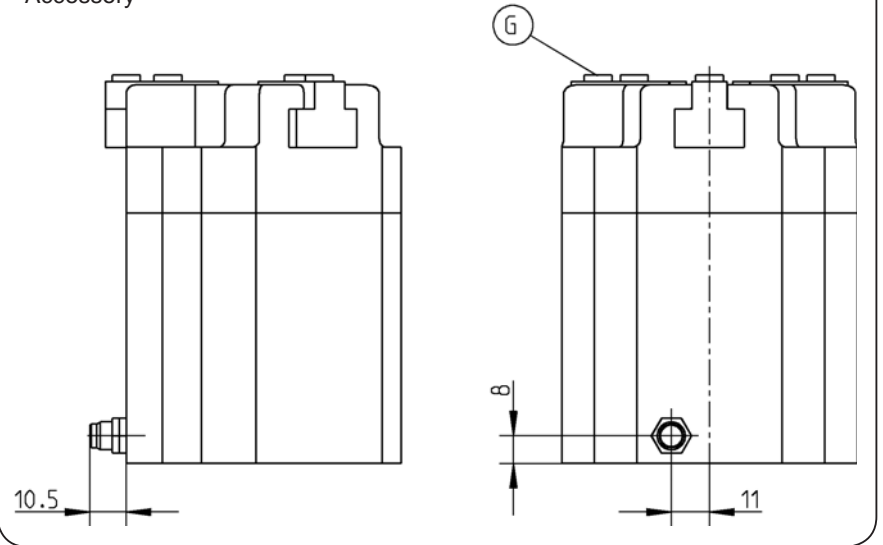


Cable straight plug  
 Order no.: **KAG500**



Cable angled plug  
 Order no.: **KAW500**

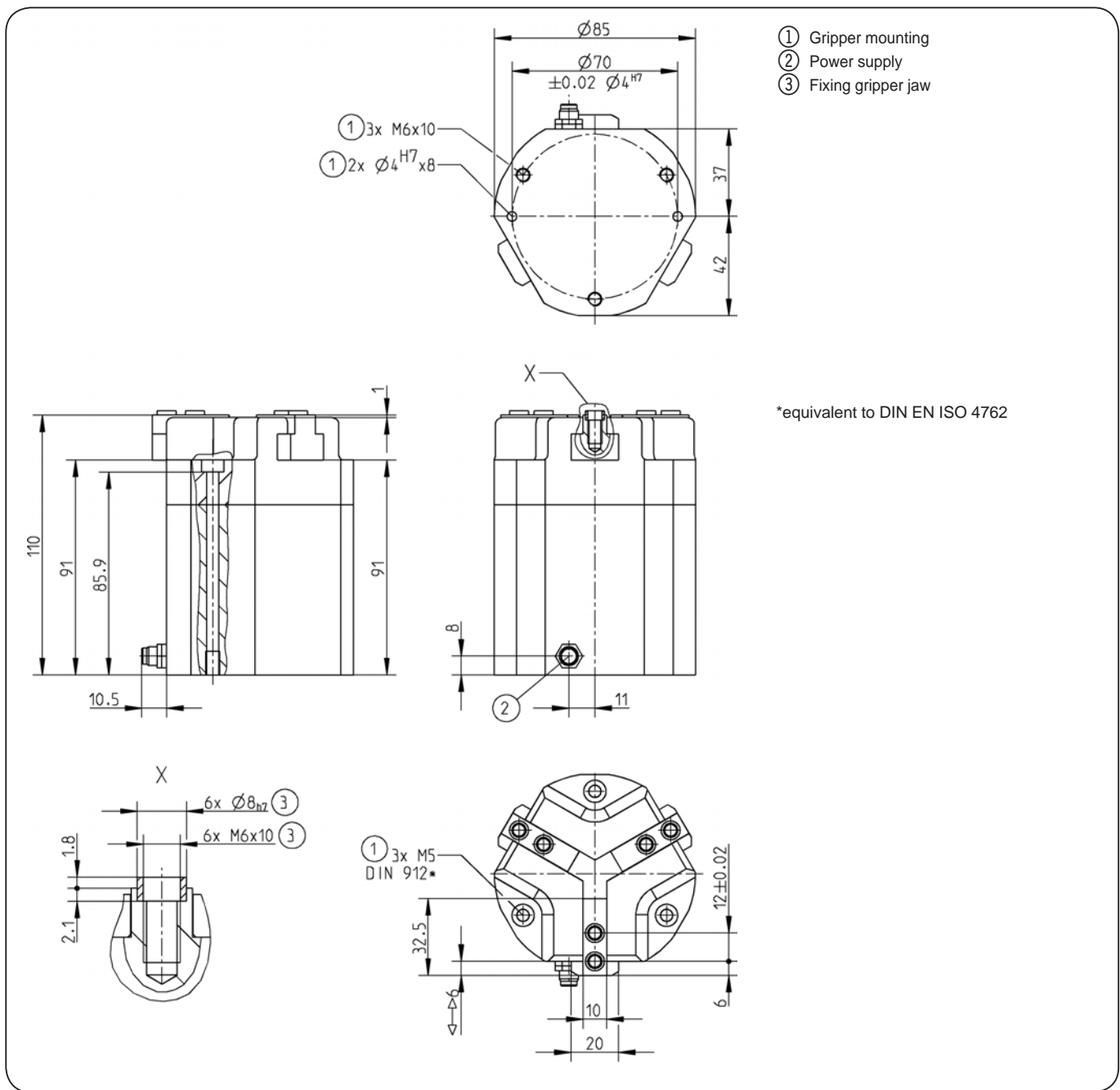
## Accessory



Subject to change without prior notice

Order no.:	GED1306C	GED1306O
Stroke per jaw [mm]:	6	6
Gripping force in closing (adjustable) [N]:	350	-
Gripping force in opening (adjustable) [N]:	-	350
Closing time/opening time [s]:	0,4	0,4
Repeatability +/- [mm]:	0,02	0,02
Voltage [V]*:	24	24
Max. current regulable by potentiometer [mA]:	210	210
Min./max. operating temperature [°C]:	5-80	5-80
Protection class:	IP52	IP52
Weight [kg]:	1,700	1,700

\* 12 Voltage on request



Subject to change without prior notice